

Reliable high-volume optimization and true shop-level customization

Built on the uniformity and cost efficiency of a high-volume production model, CabiNEXT™ offers manufacturers ready-to-assemble frameless base and wall cabinet components featuring three levels of material and finish options plus a selection of accessory customizations. This provides almost unlimited shop-level flexibility to produce finished cabinets to meet a range of style, color, cost and quality requirements – and do it profitably.

Standard Component Package

MJB's frameless CabiNEXT system is designed around a 5/8" dowel-constructed particleboard box with these key features:

- 32 mm true Euro precision and appearance
- Fast, simple and tight assembly
- Clean, smooth thermally fused laminate (TFL) finish
- Wide range of configuration flexibility



Premium Component Upgrades

- Multiple laminate options to customize cabinet color and grain appearance at the shop level
- Matching accessory and moulding programs in standard and post form laminates
- TFL and laminate slab shaker door program
- Particleboard and plywood box option



Ultra-Premium Component Upgrades

- High definition TFL and edgebanding
- Acrylic and metallic finishes
- Matching moulding and accessory programs
- Plywood construction
- Materials for solid hardwood doors and drawer fronts



Customization Options

Give your cabinets even greater market appeal by including these options to add increased value and functionality:

Moulding Packages –

Choose from a selection of profiles, grades and finishes including post-form laminate shaker style door stiles and rails.



Drawer Components –

Increasingly popular, deep drawer components, as well as standard drawer parts, are available produced from MDF, plywood and solid wood.



High Definition Laminates –

In addition to a range of unique colors, patterns and grains, the dramatic textures of high-definition, synchronized melamine laminates like Egger Zoom create cabinets that complement any decor.



A Complete Frameless Solution With Exceptional Product Customization



972-401-0005 www.mjbwood.com/cabinext For more information: CabiNEXT@mjbwood.com



Look for our FSC®-certified products



Maximize efficiency and throughput without limiting flexibility

The CabiNEXT™ cabinet component system from MJB Wood Group provides a complete, outsourced frameless cabinet component solution for manufacturers wanting to offer or expand their frameless cabinet program. CabiNEXT gives you the ability to customize your products with multiple levels of panel, finish and accessory options to deliver the quality and design freedom your customers expect and the profit target your business requires.

Expanded Opportunities, Added Productivity

Delivering a reliable supply of frameless cabinet components, ready for assembly, the CabiNEXT cabinet component system offers the potential for significant added capacity and business growth. Use it to extend in-house capabilities to meet periodic high-output demands, increase overall operational efficiency or introduce new products without prohibitive, up-front capital investment or workflow reorganization.

CabiNEXT also eliminates significant time, labor and waste associated with manufacturing basic box components so you can focus more attention and resources on increasing market share, revenue and profits.



CabiNEXT can provide extra capacity to boost existing frameless output or provide a low-risk solution to help new manufacturers add frameless products.

Complete Program, Proven Resource

CabiNEXT is a complete cabinet manufacturing solution. Beginning with a selection of panel thickness, laminate and finish options, a drawer program, moulding packages and more, CabiNEXT provides all the components you need for dowel-constructed base and wall cabinets along with a full line of complementary accessories.

CabiNEXT is marketed by MJB Wood Group, a proven worldwide sales, distribution and manufacturing organization that supports you with a team of engineering, customer service and logistic specialists as well as warehouse locations positioned to assure your success.

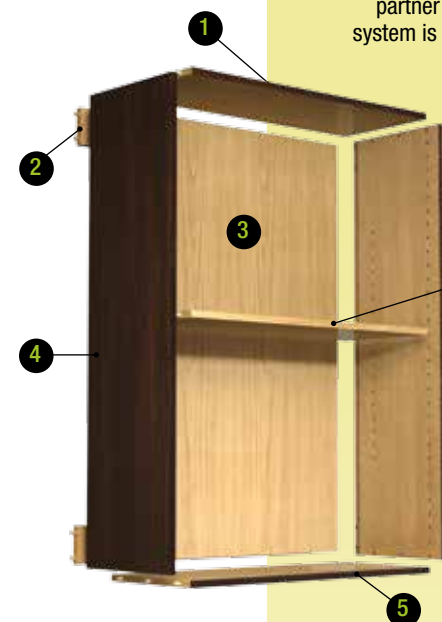
Volume Efficiency, True Versatility

Best of all, while CabiNEXT delivers the true consistency and efficiency of a pre-engineered, high-volume manufacturing solution, it also provides a combination of finish and accessory options to customize your cabinets to compete in a range of price point targets.

In addition, an extensive range of composite and solid wood door and drawer front materials are available through MJB to help you establish and maintain the unique quality and craftsmanship of your brand. (see back cover)

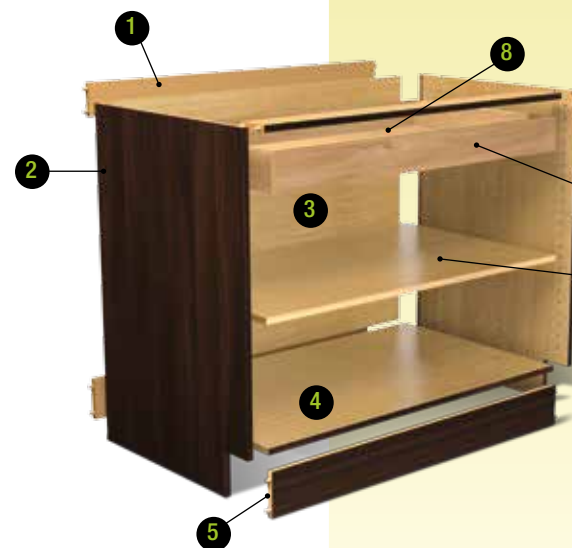
Complete Frameless Cabinet Component System

With over 35 years of materials, manufacturing and engineering experience, MJB is a proven outsourcing partner and our CabiNEXT cabinet component system is your complete solution for the following:



WALL CABINETS

1. Top Panel
2. Hang Rails/Stretchers
3. Back Panel
4. End Panels
5. Bottom Panel
6. Shelf



BASE CABINETS

1. Hang Rails/Stretchers
2. End Panels
3. Back Panel
4. Bottom Panel
5. Toe Kick
6. Shelf
7. Drawer Sides
8. Drawer Bottom



OPTIONS

1. Matching Trim Packages
2. Door Materials
3. Shaker Door Stiles & Rails
4. Deep Drawer Sides
5. TFL & Synchronized Melamine

In addition to a selection of wood and core panel options, CabiNEXT offers a wide range of thermally fused laminates as well as high-definition, synchronized thermally fused laminates.